



Metalphoto of Cincinnati

# Labels, Tags & Decals

*Solutions that Last the Life of Your Equipment*

**One size does not fit all.** Your project requires labels suitable not only for your equipment, but for the environment they serve and your budget. MPC can provide a metal or plastic solution tailored to your particular needs. Labels and tags are precision fabricated in custom shapes and sizes in a wide range of foil and rigid thicknesses with various attachment options, including adhesive and holes for mechanical attachment.

**MPC's Promise:** Provide a durable label solution that lasts the life of your equipment.

Metalphoto of Cincinnati has been a leading full-service manufacturer of durable labels, tags, decals and other identification products for more than 50 years. Experience is our strength, providing the knowledge and capability to deliver the best solution for your product identification needs.

## Because Durability Matters

Tough performance with resistance against:

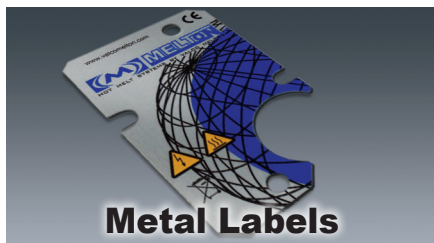
- UV/sunlight exposure
- abrasion
- extreme temperatures
- weather
- saltwater
- chemicals & solvents
- cleaning processes
- graffiti

## Specifications

- military
- aerospace
- many industry standards

## Metal & Plastic

- Metalphoto® aluminum (foil & rigid)
- anodized aluminum (foil & rigid)
- polyester
- polycarbonate
- flexible magnetic
- vinyl



**Metal Labels**



**Tamper Evident and Security Labels**



**Plastic Labels**



www.mpofcinci.com/labels.html



1080 Skillman Drive  
Cincinnati, OH 45215

Toll Free: 800.528.4058  
Fax: 513.772.8306

www.mpofcinci.com  
cincics@mpofcinci.com





Metalphoto of Cincinnati

## Your Material Choices Include:

**Metalphoto** (foil & rigid thicknesses) is our most durable and widely used material. High-resolution graphics are sealed beneath a sapphire-hard anodic layer, providing superior resistance to UV, abrasion, cleaning solvents, most chemicals, and extreme temperatures. Service range is -40°F to +650°F. Proven outdoor durability of 20+ years.

**Anodized Aluminum** (foil & rigid thicknesses) offers a built-in protective finish that provides exceptional abrasion resistance and durability against corrosion, extreme temperatures, chemicals and solvents. May be considered as an alternative to Metalphoto for certain applications where UV resistance is not a requirement.

**Polyester** possesses high tensile strength with good resistance against heat, chemicals, abrasion and tears. This economical plastic is available in a variety of colors and easily die-cut. Graphics are printed on the second surface for increased durability.

**Polycarbonate** possesses high mechanical strength and superior optical clarity with good heat, chemical, abrasion and impact resistance. This economical plastic is available in a variety of colors and easily die-cut. Graphics are printed on the second surface for maximum durability.

**Flexible Magnetic** offers the unique feature to relocate, reposition or remove – again and again. Flexibility provides the ability to conform to curved and slightly irregular surfaces with moderate resistance to moisture, general purpose and household cleaners. Optional coatings will increase durability.

**Vinyl** provides superior pliability to easily conform to curved and irregular surfaces. With moderate resistance to abrasion, weather, chemicals and moisture, vinyl is more economical than polyester and polycarbonate. Optional coatings are available to increase durability.

**Need help?** Contact us now at **800.528.4058** to discuss your project.

## Material Selection Chart:

RATING KEY		PHYSICAL / ENVIRONMENTAL PROPERTIES							DESIGN CONSIDERATIONS				
<ul style="list-style-type: none"> <li><span style="color: blue;">●</span> Excellent</li> <li><span style="color: green;">●</span> Very Good</li> <li><span style="color: yellow;">●</span> Good</li> <li><span style="color: orange;">●</span> Fair</li> <li><span style="color: red;">●</span> Poor</li> </ul>	Heat Max (°F)	Cold Max (°F)	Outdoor Durability	Abrasion Resistance	Chemical Resistance				Color Printing Compatibility	Custom Color Matching	Textures Available	Range of Thicknesses Available (In.)	
	Solvents	Fuel, Oil & Grease	Acids	Bases									
Metalphoto®	750°	-400°	●	●	●	●	●	●	●	Black/Silver Only	N/A	Gloss, Satin, Matte, #4 Brush	.003 - .125
Metalphoto® with Anodized Printed Colors	350°	-400°	●	●	●	●	●	●	●	Spot Color Only	Yes (Limited)	Gloss, Satin, Matte, #4 Brush	.003 - .125
Anodized Aluminum	350°	-400°	●	●	●	●	●	●	●	Spot Color Only	Yes (Limited)	Gloss, Satin, Matte, #4 Brush	.003 - .125
Polyester	140°	-40°	●	●	●	●	●	●	●	Full Color (CMYK)	Yes	Gloss, Matte	.005 - .010
Polycarbonate	270°	-211°	●	●	●	●	●	●	●	Full Color (CMYK)	Yes	Gloss, Matte, Velvet	.005 - .030
Hard-Coated Polyester	140°	-40°	●	●	●	●	●	●	●	Full Color (CMYK)	Yes	Gloss, Non-Glare	.005 - .010
Hard-Coated Polycarbonate	270°	-211°	●	●	●	●	●	●	●	Full Color (CMYK)	Yes	Gloss, Non-Glare, Matte	.005 - .030
Vinyl (PVC)	140°	-40°	●	●	●	●	●	●	●	Full Color (CMYK)	Yes	Semi-Gloss, Matte	.002 - .004
Flexible Magnetic	140°	-40°	●	●	●	●	●	●	●	Full Color (CMYK)	Yes	Semi-Gloss	.0024

\* This chart is intended for general guidelines only. Users must test products in the specific environment anticipated. Metalphoto of Cincinnati does not warrant performance of its materials in any environment.



1080 Skillman Drive  
Cincinnati, OH 45215

Toll Free: 800.528.4058  
Fax: 513.772.8306

www.mpofcinci.com  
cincics@mpofcinci.com

